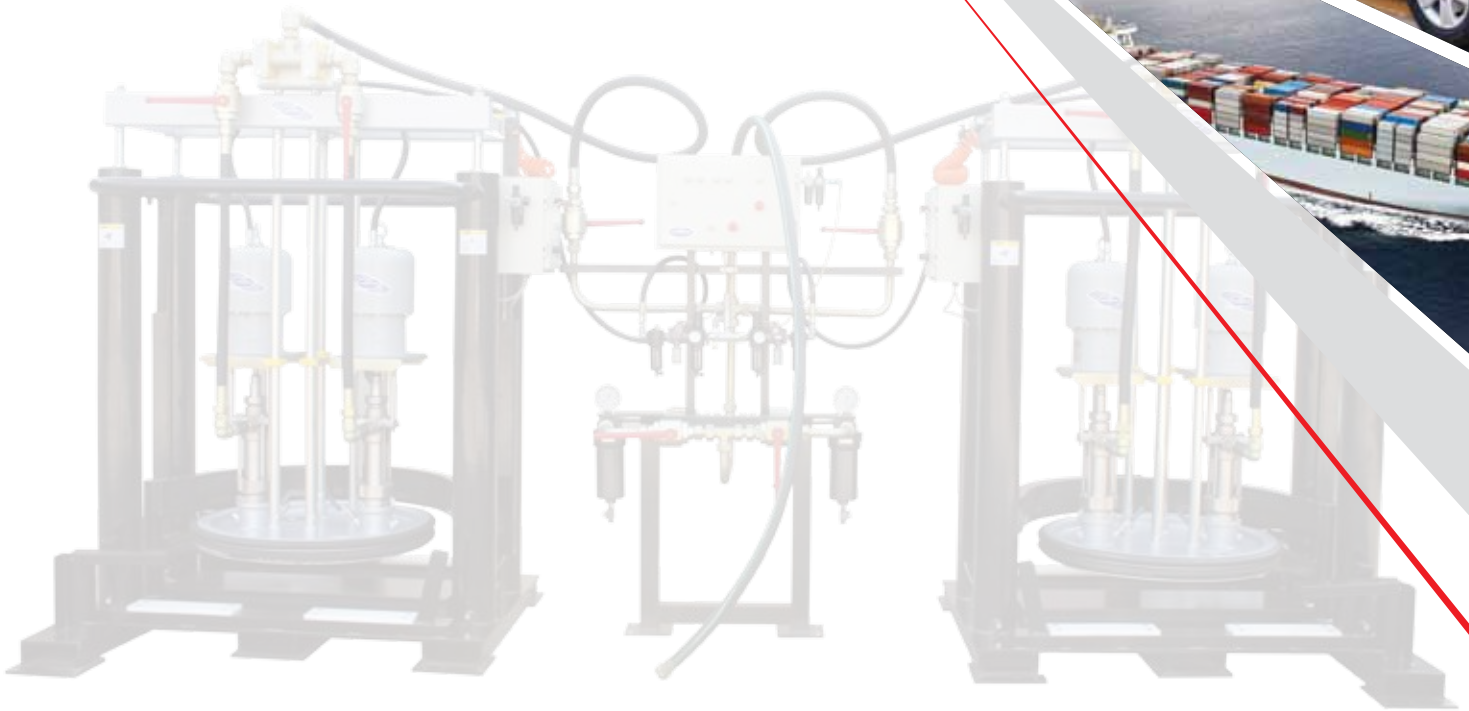


www.airlesspump.com



AIRLESS PUMP A-TECH HANDOK



A-TECH HANDOK.CO.,LTD

A . T . H . D .



A-TECH HANDOK IS **FIRST COMPANY** **TO MAKE AIRLESS PUMP** IN KOREA

A-TECH HANDOK CO., LTD was established in January, 1999 on the technical basis of "Handok Painting Machinery co., LTD" We have developed an Airless painting spray pump for the first time in Korea. Also, We have developed quiet airless pump, HQ AIRLESS PUMP, to better working condition for our customers in 2001 and continue to developed good quality airless pump.

We began to supply the airless pump to Hyundai Heavy Industries since 2005, Due to continuous development and progress. Also we are getting a good reputation in the domestic as well as overseas.

Presently, We have exported airless pump to twenty main branch areas in the world. Also we have eight certificates of utility model registration for airless pump and certificates of ISO 9001:2000 & CE. Finally we accepted an award for excellent growth of export and certificate as promising export company by Small And Medium Business Administration.

We promise to keep striving to improve the technology of our airless pump for our customers.



Certification



Safety Cart



New V-Packing



Paint Filter



Safety Bumper



Pipe Painting Auto System



CE Mark



ISO 9001



New Export



R&D Established



Innobiz Certificate



Trade Award Certificate

History

1999

01 Founded as A-TECH HANDOK Co.,Ltd.

2001

02 Developed HQ(High pressure Quiet) Airless Pump
08 Certificate of utility model registration of "Paint Filter"

2002

09 Installation of agency in Australia

2003

01 Certificate of utility model registration of
"Electric car for transport of airless pump"
05 Acquisition Certificate of ISO 9001:2000
12 Installation of agency in Singapore

2004

06 Installation of agency in India

2005

06 Safety Cart utility model registration for
paint coating machine equipped
07 Certificate of utility model registration of
"New V-Packing"
12 Acquisition Certificate of CE /
Supply the Airless pump & Electric Car to
Hyundai Heavy Industries

2006

03 Installation of agency in Netherlands
07 Set up "Pipe Painting Auto System" to SJ steel

2007

02 Accepted an award for excellent growth of export
by Small And Medium Business
06 Certificate as Promising Export Firm by Small And
Medium Business Administration

2009

08 Acquisition Certificate of ISO 9001:2008
09 Acquisition Certificate of venture Company /
Acquisition Certificate of INNO-BIZ by Small
And Medium Business Administration
10 Expansion removal in Mora-dong(3000m²)

2012

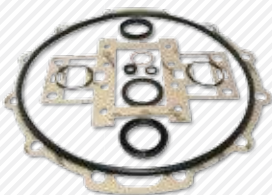
08 Established research and development department

2014

03 Expansion removal in Noksan-dong(5000m²)



HQ73:1



HQ Type Motor Repair Kit



HQ73:1 Pump Repair Kit

Pneumatic Airless Paint Sprayer

High quality pneumatic airless paint sprayer with reliable mechanical transducer. It is used in epoxy, urethane, special high viscosity paint. The discharge pressure of the high pressure pump is up to 400bar. The muffler is attached to prevent hearing loss. It is designed to prevent freezing and pulsation structure. This machine is suitable for construction, cleaning, plant project, shipbuilding.

» High pressure fluid pump

Equipped with large cylinder diameter & plenty of discharge rate constant and has a longer stroke.

» Steady best seller

This paint pump is best seller of our company products because it has high pressure. Mainly used where high pressure is required shipbuilding.

» Air filter and oiler attached

Equipped with air filter regulator and lubricator for easy air line controlling. Surely, prolong the machine's lifetime and performance.

» Pneumatic big wheels

Equipped with pneumatic wheels for easy moving.

» Prevent hearing loss

The muffler is attached to prevent hearing loss, and it is designed to prevent freezing and pulsation structure.



HQ66:1



HQ60:1



HQ50:1



HQ24:1



HQ66:1 Pump Repair Kit



HQ60:1 Pump Repair Kit



HQ50:1 Pump Repair Kit



HQ24:1 Pump Repair Kit

	HQ73:1	HQ66:1	HQ60:1	HQ50:1	HQ24:1
PRESSURE RATIO	73:1(72:1)	66:1(68:1)	60:1	50:1	24:1
OPERATING AIR PRESSURE	3~7bar	3~7bar	3~7bar	3~7bar	3~7bar
MAX. DELIVERY	11.7liter/min	12.7liter/min	14liter/min	16.3liter/min	32liter/min
MAX. DISCHARGE PRESSURE	510bar(7400psi)	480bar(7000psi)	420bar(6100psi)	350bar(5100psi)	170bar(2500psi)
NOISE LEVEL	75~80db	75~80db	75~80db	75~80db	75~80db
AIR MOTOR STROKE	120mm	120mm	120mm	120mm	120mm
AIR INLET SIZE	3/4inch	3/4inch	3/4inch	3/4inch	3/4inch
FLUID INLET SIZE	1inch	1inch	1inch	1inch	1inch
FLUID OUTLET SIZE	1/4, 3/8inch	1/4, 3/8inch	1/4, 3/8inch	1/4, 3/8inch	1/4, 3/8inch
WEIGHT	98kg	98kg	98kg	98kg	98kg
CYLINDER DIAMETER	Φ265	Φ265	Φ265	Φ265	Φ265
APPLICATIONS	Shipyards, Construction, Container coating				
TYPICAL FLUID HANDLED	Epoxy primers, Alkyd, Urethane, High Viscosity materials				



HK TYPE

Product



Pneumatic Airless Paint Sprayer

HK series are the most ideal airless pump for rough painting job. This pump used in construction, cleaning, and container. The best price, and good quality.

Typical fluid handled

epoxy, alkyd, polyurethane, special high viscosity Paint.

Applications

- » Roof coating
- » Shipyard and Marine Painting
- » Construction
- » Container coating
- » Steel structure
- » High viscosity coating
- » Protective coating



HK Type Motor Repair Kit



HK45:1 Pump Repair Kit



HK68:1



HK63:1



HK56:1



HK22:1



HK68:1 Pump Repair Kit



HK63:1 Pump Repair Kit



HK56:1 Pump Repair Kit



HK22:1 Pump Repair Kit

	HK68:1	HK63:1	HK56:1	HK45:1	HK22:1
PRESSURE RATIO	68:1	63:1	56:1	45:1	22:1
OPERATING AIR PRESSURE	3~7bar	3~7bar	3~7bar	3~7bar	3~7bar
MAX. DELIVERY	10.8liter/min	11.8liter/min	13liter/min	15liter/min	30liter/min
MAX. DISCHARGE PRESSURE	480bar(7000psi)	440bar(6400psi)	390bar(5700psi)	320bar(4600psi)	150bar(2200psi)
NOISE LEVEL	90~95db	90~95db	90~95db	90~95db	90~95db
AIR MOTOR STROKE	120mm	120mm	120mm	120mm	120mm
AIR INLET SIZE	3/4inch	3/4inch	3/4inch	3/4inch	3/4inch
FLUID INLET SIZE	1inch	1inch	1inch	1inch	1inch
FLUID OUTLET SIZE	1/4, 3/8inch	1/4, 3/8inch	1/4, 3/8inch	1/4, 3/8inch	1/4, 3/8inch
WEIGHT	93kg	93kg	93kg	93kg	93kg
CYLINDER DIAMETER	Φ253.8	Φ253.8	Φ253.8	Φ253.8	Φ253.8
APPLICATIONS	Shipyards, Construction, Container coating				
TYPICAL FLUID HANDLED	Epoxy primers, Alkyd, Urethane, High Viscosity materials				

Pneumatic Airless Paint Sprayer

HP series with different pressure ratio, from 10:1 to 48:1
 HP series are small size and light weight, ideal furniture painting, factory, steel structure, commercial or industrial painting jobs which last 12 hours every day.
 HP10:1 is used at the aqueous liquid. Because material of HP10:1 displacement is stainless steel.

Applications

- » Shipyard and Marine Painting
- » Construction
- » Steel structure
- » lacquer and varnish
- » Protective coating
- » Furniture
- » Ship maintenance



HP48:1



HP30:1



HP20:1



HP10:1

HP Type Motor Repair Kit



HP48:1 Pump Repair Kit



HP30:1 Pump Repair Kit



HP20:1 Pump Repair Kit



HP10:1 Pump Repair Kit

	HP30:1	HP48:1	HP20:1	HP10:1
PRESSURE RATIO	30:1	48:1	20:1	10:1
OPERATING AIR PRESSURE	3~6.5bar	3~6.5bar	3~6.5bar	3~6.5bar
MAX. DELIVERY	4liter/min	2.5liter/min	8liter/min	12liter/min
MAX. DISCHARGE PRESSURE	195bar(2800psi)	310bar(4500psi)	130bar(1900psi)	65bar(950psi)
AIR INLET SIZE	1/2inch	1/2inch	1/2inch	1/2inch
FLUID INLET SIZE	3/4inch	3/4inch	3/4inch	3/4inch
FLUID OUTLET SIZE	1/4, 3/8inch	1/4, 3/8inch	1/4, 3/8inch	1/4, 3/8inch
WEIGHT	30kg	30kg	30kg	30kg
APPLICATIONS	Shipyards, Construction, Container coating, Furniture			
TYPICAL FLUID HANDLED	Enamels, Polyurethane, Normal coating			

Pneumatic Airless Paint Sprayer

HM series are small size and light weight. The discharge pressure of the high pressure pump is up to 150bar. HM series are used in construction, furniture, ship maintenance.

Applications

- » Shipyard and Marine Painting
- » Construction
- » Metal structure
- » Lacquer and varnish
- » Protective coating
- » Furniture
- » Ship maintenance



HM Type Motor Repair Kit



HM23:1 Pump Repair Kit



HM16:1 Pump Repair Kit



HM10:1 Pump Repair Kit



HM5:1 Pump Repair Kit



HM23:1



HM16:1



HM10:1



HM5:1

Product **HM TYPE**

	HM23:1	HM16:1	HM10:1	HM5:1
PRESSURE RATIO	23:1	16:1	10:1	5:1
OPERATING AIR PRESSURE	3~6.5bar	3~6.5bar	3~6.5bar	3~6.5bar
MAX. DELIVERY	2liter/min	4liter/min	6liter/min	12liter/min
MAX. DISCHARGE PRESSURE	150bar(2200psi)	105bar(1500psi)	65bar(950psi)	32bar(470psi)
AIR INLET SIZE	3/8inch	3/8inch	3/8inch	3/8inch
FLUID INLET SIZE	3/4inch	3/4inch	3/4inch	3/4inch
FLUID OUTLET SIZE	1/4, 3/8inch	1/4, 3/8inch	1/4, 3/8inch	1/4, 3/8inch
WEIGHT	26kg	26kg	26kg	26kg
APPLICATIONS	Shipyards, Construction, Container coating, Furniture			
TYPICAL FLUID HANDLED	Enamels, Poly urethane, Normal coating			

Product **HO** TYPE / **HX** TYPE



	HO50:1	HO15:1	HO10:1	HO5:1
PRESSURE RATIO	50:1	15:1	10:1	5:1
OPERATING AIR PRESSURE	3~10bar(50~145psi)	3~10bar(50~145psi)	3~10bar(50~145psi)	3~10bar(50~145psi)
MAX. DELIVERY	3liter/min(0.8gpm)	13liter/min(3.5gpm)	19liter/min(5gpm)	15liter/min(4gpm)
MAX. DISCHARGE PRESSURE	500bar(7200psi)	150bar(2200psi)	100bar(2200psi)	50bar(720psi)
TYPICAL FLUID HANDLED	High viscosity fluid, Greases, Adesives			



HX73:1



	HX73:1	HX60:1	HX50:1
PRESSURE RATIO	73:1(72:1)	60:1	50:1
OPERATING AIR PRESSURE	3~7bar	3~7bar	3~7bar
MAX. DELIVERY	11.7liter/min	14liter/min	16.3liter/min
MAX. DISCHARGE PRESSURE	510bar(7400psi)	420bar(6100psi)	350bar(5100psi)
NOISE LEVEL	75~80db	75~80db	75~80db
AIR MOTOR STROKE	120mm	120mm	120mm
AIR INLET SIZE	3/4inch	3/4inch	3/4inch
FLUID INLET SIZE	1inch	1inch	1inch
FLUID OUTLET SIZE	1/4, 3/8inch	1/4, 3/8inch	1/4, 3/8inch
CYLINDER DIAMETER	Φ265	Φ265	Φ265
APPLICATIONS	Shipyards, Construction, Container coating		
TYPICAL FLUID HANDLED	Epoxy primers, Alkyd, Urethane, High Viscosity materials		

Electric-operated diaphragm airless sprayers boost efficiency of work with portable structure mainly in construction field, and this is equipped with AC motors.

Applications

- » Shipyard and Marine Painting
- » Construction
- » Metal structure
- » lacquer and varnish
- » Protective coating
- » Furniture
- » Ship maintenance



PRO-100N



PRO-60N

	PRO-60N / 60N000	PRO-100N / 100N000
POWER SUPPLY	AC 220V, 50Hz or 60Hz	AC 220V, 50Hz or 60Hz
MAX. OUTPUT(L/min)	6	10
EFFECTIVE PRESSURE(bar)	150-220	150-220
MOTOR POWER	1.5Hp / 1,750rpm	2.0Hp / 3,600rpm
WEIGHT(net/packing,kgs)	42 / 50	63 / 87
DIMENSION (net/packing:cm)	52 x 45x 60 / 57 x 52 x 75	54 x 64 x 70 / 85 x 77 x 85
TYPICAL FLUID HANDLED	ALKYD, WATER	EPOXY, ALKYD, URETHANE, WATER

LINE SPRAY Equipment

As a machine for Painting the road lines, all easily available, and this work possible in a short time. The Painting also available at a relatively low cost.



LINE SPRAY EQUIPMENT

Product



LINE SPRAY

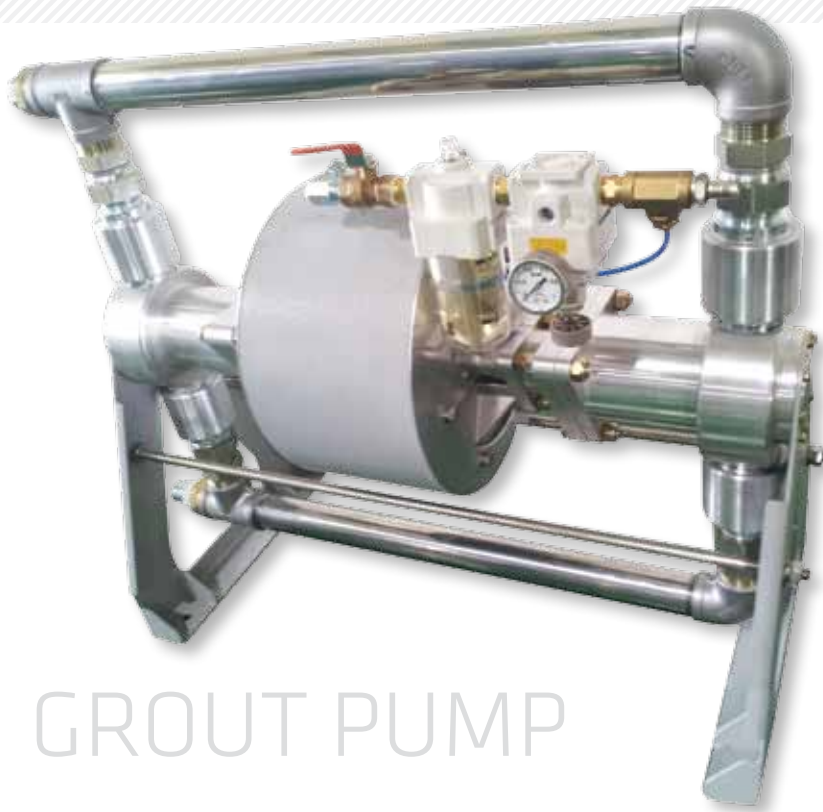
DOUBLE SPRAY KIT



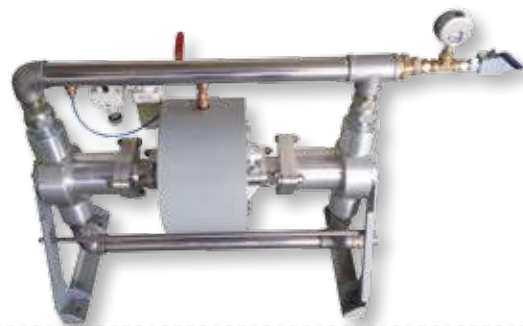
(For Double lines, You can order double spray kit as optional item)

	LINE SPRAY
MAX. DELIVERY	10liter/min
MAX. DISCHARGE PRESSURE	250bar(3600psi)
ENGINE	5.5HP(Honda)
DIMENSION(CM)	130 x 85 x 120
WEIGHT	120kg
APPLICATIONS	Line Marking

Grout Pump is smaller size and more light weight than other Grout Pump, It is ideal in the construction field. It is used in grout and special high viscosity paint. The discharge pressure of the pressure pump is up to 140bar.



GROUT PUMP



	HG20:1	HG5:1
PRESSURE RATIO	20:1	5:1
OPERATING AIR PRESSURE	3~7bar	3~7bar
MAX. DELIVERY	14liter/min	55liter/min
MAX. DISCHARGE PRESSURE	140bar(2000psi)	35bar(510psi)
AIR MOTOR STROKE	75mm	75mm
APPLICATIONS	Construction, Mixed grout work	
TYPICAL FLUID HANDLED	High viscosity fluid, Grout	

AIRLESS PAINT RAM PUMP

These pumps are used for extruding and atomizing low to high viscosity fluid. Installing a fallow-plate and a special pneumatic ram on the pump, enables it to evacuate from 20 liter upto 200 liter easily, and transfer the fluid efficiently.

Typical applications Feeding automatic from fiber or steel drum (truding, streaming, coating), Dispensing sealants and adhesives. Transferring materials for filling drums, pails, caulking tube or chubs.

Typical fluid handled

- » Sealant
- » Silicon
- » P.V.C
- » Greases
- » Adhesives
- » Special high viscosity Paint

Dimension (cm)

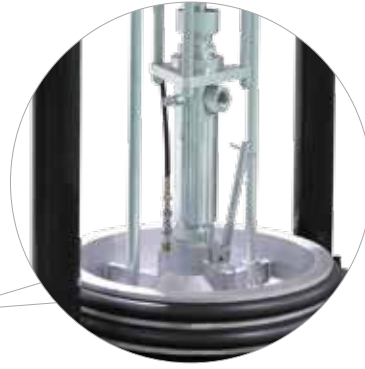
- » 200L : 95(W) x 67(L) x 155(H)
- » 20L : 56(W) x 45(L) x 130(H)



HQR60:1 (200L, 20L)	
PRESSURE RATIO	60:1
OPERATING AIR PRESSURE	3~7bar
MAX. DELIVERY	12liter/min
MAX. DISCHARGE PRESSURE	420bar(6100psi)
AIR MOTOR STROKE	120mm
AIR INLET SIZE	3/4inch
FLUID OUTLET SIZE	1/4, 3/8inch
APPLICATIONS	Shipyards, Construction, Container coating, Automobile Painting
TYPICAL FLUID HANDLED	High viscosity fluid, Greases, Adhesives



HKR55:1 (200L)



HKR55:1 (20L)

HKR55:1 (200L, 20L)	
PRESSURE RATIO	55:1
OPERATING AIR PRESSURE	3~7bar
MAX. DELIVERY	10liter/min
MAX. DISCHARGE PRESSURE	390bar(5700psi)
AIR MOTOR STROKE	120mm
AIR INLET SIZE	3/4inch
FLUID OUTLET SIZE	1/4, 3/8inch
APPLICATIONS	Shipyards, Construction, Container coating, Automobile Painting
TYPICAL FLUID HANDLED	High viscosity fluid, Greases, Adhesives



HDR 48 : 1

Typical fluid handled

- » Greases
- » Adhesives
- » Epoxy
- » Urethane
- » Special high viscosity Paint

HDR 48:1	
PRESSURE RATIO	48:1
OPERATING AIR PRESSURE	3~7bar
MAX. DELIVERY	2.4liter/min
MAX. DISCHARGE PRESSURE	300bar(4400psi)
AIR INLET SIZE	1/2inch
WEIGHT	56kg
DIMENSION(CM)	32(W) x 37(L) X 120(H)
TYPICAL FLUID HANDLED	Silicone, Sealant, Adhesive, Undercoating, PVC Sol, Epoxy, Grease

Triple 68:1 Booster Pump



To Spraying Guns

Material pressure could be boosted by helping booster pumps up to 400 bar for some high pressure applications like PVC spraying.

Piping system should be design based on needed flow rate and working pressure.

Some high pressure regulators are used for adjusting material pressure on spraying gun(PVC) or extrusion gun(sealer).

A large number of guns could work without any problem.

The other advantage is supplying material for all manual and robotic applying devices simultaneously without any interruption.

Pump With Single & Dual Post Ram



These pumps are used for extruding and atomizing low to high viscosity fluid.

Installing a fallow-plate and a special pneumatic ram on the pump, enables it to evacuate from 20 lit upto 200 lit easily, and supporting it with a powerful pump lower along with A TOP-K Air motor it can evacuate and transfer the fluids efficiently.

ADVANTAGES

- » Servicing, repairing and replacement of the spare parts, as soon as possible.
- » Easy transfer of fluid
- » High production flow rate
- » Trouble free application
- » Efficient material use

TYPICAL FLUIDS HANDELED

- » Low to high viscosity fluids
- » Different kinds of adhesives
- » Sealants
- » Silicon
- » P.V.C

1000Lit. Dual Ram SEALER & PVC CENTRAL SYSTEM



This system is including central and booster pneumatic pumps. It is mainly used for car manufacturing industries and some other industries which have massive production and the material feeding point is far from consuming points. Central system could work by a ram unit with single/double pumps or dual ram units for nonstop working (for this purpose, having an automatic change over system is necessary). By this solution, pumping viscous material like sealer up to 69.2 lit/min flow rate and Max. 140 bar working pressure in the pipe line from central pumps to booster pumps will be accessible.

Pumps With Dual Post Ram Equipped with electrical heater

FEATURES AND BENEFITS

- » New fluid pump section with Severe-Duty construction for extended life.
- » Latest-technology seals extra-long life pump-rod packing prevent leaks.
- » 55gal(200lit) large 6.5in.(165mm)ram cylinders and 5 gal(19lit), 3in. (76mm)dual post ram cylinders provide high pump loading and flow rate capability.
- » High-output per cycle reduces wear for longer life and fewer repair costs.
- » Floating-piston seal and flow-through priming plate improve pump loading of high viscosity materials.
- » Optional MegaFlo high melt-rate platen also reduces material loss.

TYPICAL APPLICATIONS

- » Feeding automatic and robotic applicators directly from fiber or steel drums (extruding, streaming, coating)
- » Dispensing heated sealants and adhesives to one or more manual operator dispensing station (sealing, product assembly)
- » Transferring raw materials in the formulation of hot melt products.
- » Transferring materials for filling drums, pails, caulking tube or chubs.

TYPICAL FLUIDS HANDLED

- » Butyl rubber
- » Ethylene vinyl acetate(EVA)
- » Polyamide
- » Polyurethane reactive(PUR)
- » Pressure sensitive adhesives(PSA)
- » Polyisobutylene(PIB)
- » Warm melt sealers



Pumps With Change Over System Dual Post Ram

Equipped with electrical heater



FEATURES AND BENEFITS

- » New fluid pump section with Severe-Duty construction for extended life.
- » Latest-technology seals extra-long life pump-rod packing prevent leaks.
- » 40gal(200lit) large 6.5in.(165mm)ram cylinders and 5 gal(19lit), 3in. (76mm) dual post ram cylinders provide high pump loading and flow rate capability
- » High-output per cycle reduces wear for longer life and fewer repair costs.
- » Floating-piston seal and flow-through priming plate improve pump loading of high viscosity materials.
- » Optional MegaFlo high melt-rate platen also reduces material loss.

TYPICAL APPLICATIONS

- » Feeding automatic and robotic applicators directly from fiber or steel drums (extruding, streaming, coating)
- » Dispensing heated sealants and adhesives to one or more manual operator dispensing station (sealing, product assembly)
- » Transferring raw materials in the formulation of hot melt products.
- » Transferring materials for filling drums, pails, caulking tube or chubs.

TYPICAL FLUIDS HANDLED

- » Butyl rubber
- » Ethylene vinyl acetate(EVA)
- » Polyamide
- » Polyurethane reactive(PUR)
- » Pressure sensitive adhesives(PSA)
- » Polyisobutylene(PIB)
- » Warm melt sealers



Paint Circulation System [P. M. R]



This system is consisting of some other systems which has the responsibility of Charging, Preparing, Filtering and Circulating of paint for paint lines.

The main application of these systems is in the factories where applying huge amount of paint is needed in different working shift and car manufacturing companies are the most popular ones.

FEATURES AND BENEFITS

- » Pre-assembled and pre-engineered modules allow fast, easy installation for end users.
- » Modules packaged and shipped in one crate.
- » High volume 4-ball piston displacement pump for low cycle rate and long intervals between packing replacement.
- » Sanitary Clamp connections for easy cleaning and flushing.

TYPICAL APPLICATIONS

- » Low pressure, High volume circulation for :
- » Automotive assembly plants
- » Automotive component suppliers

TYPICAL FLUID HANDLED

- » Solvent borne paints and coating
- » Waterborne paint and coating



AH-7000

Stainless steel gun body is not well Corrosion
Repair kit could be easily replaced.



AH-5000

Aluminum gun body with light weigh
Repair kit could be easily replaced.

	AH-7000	AH-5000
MAX. WORKING PRESSURE	500bar(7300psi)	350bar(5100psi)
BODY MATERIAL	Forged Stainless Steel	Forged Aluminum
INLET CONNECTOR	1/4"	1/4"
OUTLET CONNECTOR	7/8"	M18, 7/8"
WEIGHT	530g	390g
PART NO.	AH-7000	AH-5000



HH GUN

Max. Working pressure
: 500bar(7300psi)
Inlet connector : 1/4", 3/8"
Outlet connector : 7/8"
4-finger Trigger
Material : S45C
Part No : 071-000



HS PLUS GUN

Max. Working pressure
: 350bar(5100psi)
Inlet connector : 1/4", 3/8"
Outlet connector : 7/8"
4-finger Trigger, 2-finger Trigger
Material : Forged Aluminum
Part No : 073-000



AL-3000 GUN

Max. Working pressure
: 300bar(4400psi)
Inlet connector : 1/4", 3/8"
Outlet connector : 7/8"
Material : Aluminum
Part No : 100-120



LINER GUN

Max. Working pressure
: 250bar(3600psi)
Inlet connector
: 1/4", 3/8"
Outlet connector : 7/8"
Material : Aluminum
Part No : 100-006



UL GUN

Max. Working pressure
: 500bar(7300psi)
Weight : 630g
Part No : 775-020



HIGH PRESSURE HD FLOW GUN

Max. Working pressure
: 510bar(7400psi)
Material : SCM4
Part No : 300-000



FLOW GUN

Max. Working pressure
: 410bar(6000psi)
Part No : 400-000



AUTO GUN

Max. Working pressure
: 510bar(7400psi)
Material : S45C
Part No : 060-001



AUTO GUN

Max. Working pressure
: 350bar (5100psi)
Material : S45C
Part No : 075-000



DELIVERY VALVE

Max. Working pressure
: 510bar(7400psi)
Material : S45C
Part No : 060-002

POLE GUN



	MAX PRESSURE	LENGTH	Part No(Carbon / Stainless)	WEIGHT
SCM Pole gun (Tube : Carbon steel)	510bar (7400psi)	0.9M	073-100 / 073-100-1	680g
		1.2M	073-120 / 073-120-1	720g
SCM Pole gun (Tube : Stainless steel)		1.5M	073-150 / 073-150-1	800g
		1.8M	073-180 / 073-180-1	930g
		2.4M	073-240 / 073-240-1	1400g



AOPR(Air Operated Pressure Regulator)

- » Pressure control device for injecting a fluid at a constant pressure.
- » Fluid in out : 3/4"
- » Proper pressure : 70~350bar(1000~5100psi)
- » Part No. 100-502-1



FPR(Fluid Pressure Regulator) BPR(Back Pressure Regulator)

- » Pressure control device for injecting a fluid at a constant pressure.
- » Proper pressure : 25~350bar(370~5100psi)
- » FPR Part No 100-502 / BPR Part No. 100-501



- » Hose Swivel Nipple(1/4"x1/4")
- Part No. 099-012
- » Hose Swivel Nipple(3/8"x3/8")
- Part No. 099-011
- » Hose Swivel Nipple(3/8"x1/4")
- Part No. 099-013



- » Gun Swivel Nipple(1/4"x1/4")
- Part No. 099-010
- » Gun Swivel Nipple(3/8"x3/8")
- Part No. 099-01101
- » Gun Swivel Nipple(1/2"x1/2")
- Part No. 099-014



- » Z-swivel Nipple(1/4"x1/4")
- Part No. 099-018
- » Z-swivel Nipple(3/8"x3/8")
- Part No. 099-016
- » Z-swivel Nipple(1/2"x1/2")
- Part No. 099-017



- » Filter Swivel Nipple[1/4"*1/4"]
- Part No. 099-01001



- » Hose Nipple
(1/4"x1/4", 1/4"x3/8", 3/8"x3/8")
- 1/4"x1/4" Part No. 100-019
- 1/4"x3/8" Part No. 100-021
- 3/8"x3/8" Part No. 100-020



- » Gun Nozzel
- Part No. 099-009
- » Pole Gun Nozzle
- Part No. 099-008



- » Tip Filer Housing M18, 7/8"
- Part No. 099-01001



- » Sanding Nozzle
(∅9.5, ∅12.5, ∅14.5)
- ∅9.5 Part No. SDN-095
- ∅12.5 Part No. SDN-125
- ∅14.5 Part No. SDN-145



- » Surge Filter (#40, #60, #80, #100)
 - #40 Part No. STF-040
 - #60 Part No. STF-060
 - #80 Part No. STF-080
 - #100 Part No. STF-100

- » Suction Filter (3/4", 1")
 - 3/4"(40#) Part No. SF-034
 - 3/4"(60#) Part No. SF-034-1
 - 1"(40#) Part No. SF-010
 - 1"(60#) Part No. SF-010-1

- » Long Filter (#40, #60, #100)
 - #40 Part No. LF-040
 - #60 Part No. LF-060
 - #100 Part No. LF-100



- » Tip Filter
(#30, #40, #60, #80, #100, #200)

- #30 Part No. 820-030
- #40 Part No. 820-040
- #60 Part No. 820-060
- #80 Part No. 820-080
- #100 Part No. 820-100
- #200 Part No. 820-200

- » Adaptor (M18 x 7/8")
 - Part No. 800-002

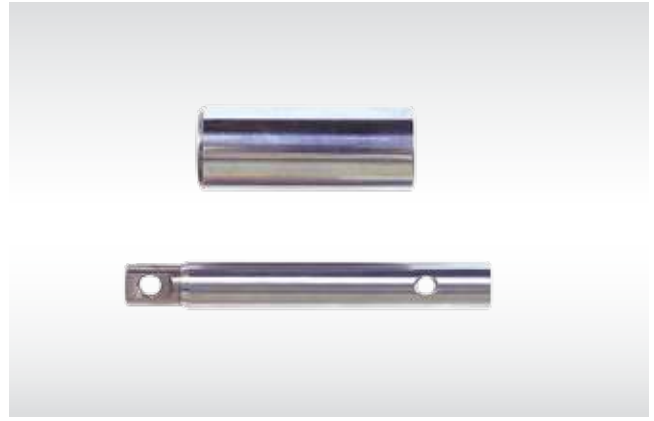


- » Air Regulator (1/2, 3/8, 3/4)
 - 1/2 Part No. 301-402
 - 3/8 Part No. 451-401
 - 3/4 Part No. 731-401

- » Air Regulator Package
 - Part No. 731-405



- » 390 Rod
- Part No. 390-001
- » 495 PRO Rod
- Part No. 495-001



- » 1000 Rod
- Part No. 100-001
- » 1000 Sleeve
- Part No. 100-002



- » 1500 Rod
- Part No. 150-001
- » 1500 Sleeve
- Part No. 150-002



- » 1595 Rod
- Part No. 159-001
- » 1595 Sleeve
- Part No. 159-002



- » Aluminum Nozzle 7/8"[AN-001]
- » Aluminum Nozzle M18[AN-002]



- » Extention Bar(S45C) [0.3M, 0.5M, 0.7M, 1M]
- 0.3M Part No. HE-003
- 0.5M Part No. HE-005
- 0.7M Part No. HE-007
- 1M Part No. HE-010

- » Extention Bar(AL) [0.3M, 0.5M, 0.7M, 1M]
- 0.3M Part No. LE-003
- 0.5M Part No. LE-005
- 0.7M Part No. LE-007
- 1M Part No. LE-010



» Switch Tip Guard 11/16"
- Part No. 800-004, 800-003



» Standard Tip Guard 11/16"
- Part No. 800-003-2
» Standard Tip Guard 7/8"
- Part No. 800-003-1



» Standard Tip
- Part No. 269-000, 163-000



» Switch Tip
- Part No. 286-000



» Switch Tip & Standard Tip



» 495 PRO Sleeve
- Part No. 495-002



» Paint Hose 1/4" x15M
- Part No. 810-004



» Paint Hose 3/8"x15M
- Part No. 810-005

Agitator Air Motor (1AM, 2AM, 4AM, 6AM)



1AM
 H.P : 1/3hp
 Part No. 100-022
 Max. Capacity : 20L



2AM
 H.P : 3/4hp
 Part No. 100-023
 Max. Capacity : 200L



4AM
 H.P : 11/2hp(1.12kw)
 Part No. 100-024
 Max. Capacity : 200L



200L Drum Type Agitator

Standard Capacity : 200L
 Application Air Motor
 : 2AM, 4AM
 [Part No.]
 Hand Agitator 2AM
 : A200-002
 Hand Agitator 4AM
 : A200-004



Hand Agitator

Standard Capacity : 200L
 Application Air Motor
 : 1AM, 2AM, 4AM
 [Part No.]
 Hand Agitator 1AM
 : A2040-00201
 Hand Agitator 2AM
 : A2040-00202
 Hand Agitator 4AM
 : A2040-00204



Hand Agitator(Fan type)

Standard Capacity : 40L
 Application Air Motor :
 : 1AM, 2AM, 4AM
 [Part No.]
 Hand Agitator 1AM
 : A2040-00101
 Hand Agitator 2AM
 : A2040-00102
 Hand Agitator 4AM
 : A2040-00104



Impeller + shaft

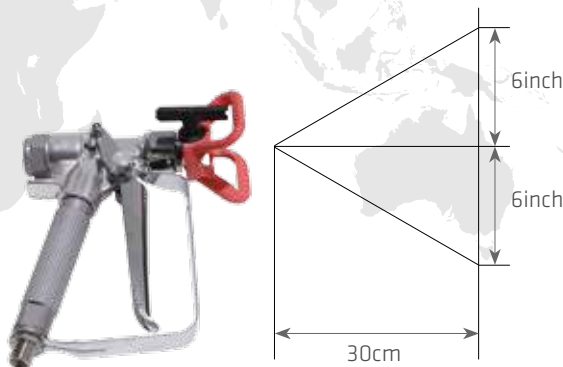


Table of the Tip-Connected Number

TIP MODEL OF INSIDE DIAMETER	CAPACITY SPOUTING OIL		RANGE OF ANGLE								
			1	2	3	4	5	6	7	8	9
	A	B	(50-100)	(100-150)	(150-200)	(200-250)	(250-300)	(310-360)	(360-410)	(410-460)	(460-510)
07	0.15		107	207	307	407					
09	0.27		109	209	309	409	509	609			
11	0.42		111	211	311	411	511	611	711		
13	0.61		113	213	313	413	513	613	713	813	
15	0.80		115	215	315	415	515	615	715	815	
17	1.02		117	217	317	417	517	617	717	817	917
19	1.29		119	219	319	419	519	619	719	819	919
21	1.59		121	221	321	421	521	621	721	821	921
23	1.89			223	323	423	523	623	723	823	923
25	2.27			225	325	425	525	625	725	825	925
27	2.65	0.87		227	327	427	527	627	727	827	927
29	3.07	1.10		229	329	429	529	629	729	829	929
31	3.52	1.36		231	331	431	531	631	731	831	931
33	3.97	1.70		233	333	433	533	633	733	833	933
35	4.50	2.08		235	335	435	535	635	735	835	935
37	5.03	2.54		237	337	437	537	637	737	837	937
39	5.60	3.36		239	339	439	539	639	739	839	939
43	6.85	5.11			343	443	543	643	743	843	
47	8.14	7.15			347	447	547	647	747	847	
51	9.69	9.27			351	451	551	651	751		
55	11.32	11.92				455	555	655	755		
59		15.14				459	559	659	759		
63		18.93				463	563	663	763		
67							567	667			
71								671			

1. Tips out of bold line should be ordered after confirmation of out stock and delivery date.
2. Range of angle is based on 30cm spray distance.
3. Capacity of spouting oil is based on following conditions.
 "A" paint viscosity : 250 CPS, paint spraying pressure : 110kgf/cm²
 "B" paint viscosity : 56,000 CPS, paint spraying pressure : 110kgf/cm²

LEADER in Airless Pump Technology



Reference : Explanation of TIP Number

■ 6 1 9

- Diameter of the tip : 0.019inch
- Painting range(inch)sprayed from 30cm distance of the gun tip.

※ All specification can be changed for improving quality without prenotification



We Always Do Our Best
For Our Customer's Satisfaction!

 **A-TECH HANDOK.CO.,LTD**

Head Office(KOREA)

OFFICE

118-35, Gamgeon-Dong, Sasang-Gu, Busan, Korea

FACTORY

1744-5, Songjeong-Dong, Gangseo-Gu, Busan, Korea

Tel +82 51. 328. 2111 **Fax** +82 51. 328. 2110

E-mail (Domestic) info@airlesspump.com
(Overseas) a-techhandok@hanmail.net

URL www.airlesspump.com

Branch Office(CHINA)

SHANGHAI A-TECH HANDOK CO.,LTD

OFFICE 1008, 435, YINGGANG-ROAD
QINGPU-DISTRICT, SHANGHAI, CHINA

Tel +86 21. 6920. 5077

E-mail a-techhandok@hanmail.net

Branch Office(IRAN)

Azin Pash

No. 14, 19th Fat'h St., 4th Km of Fat'h Highway,
Tehran-Iran

Tel +98 21. 66808654. 66819277

Fax +98 21. 66819483

E-mail info@azinpash.com